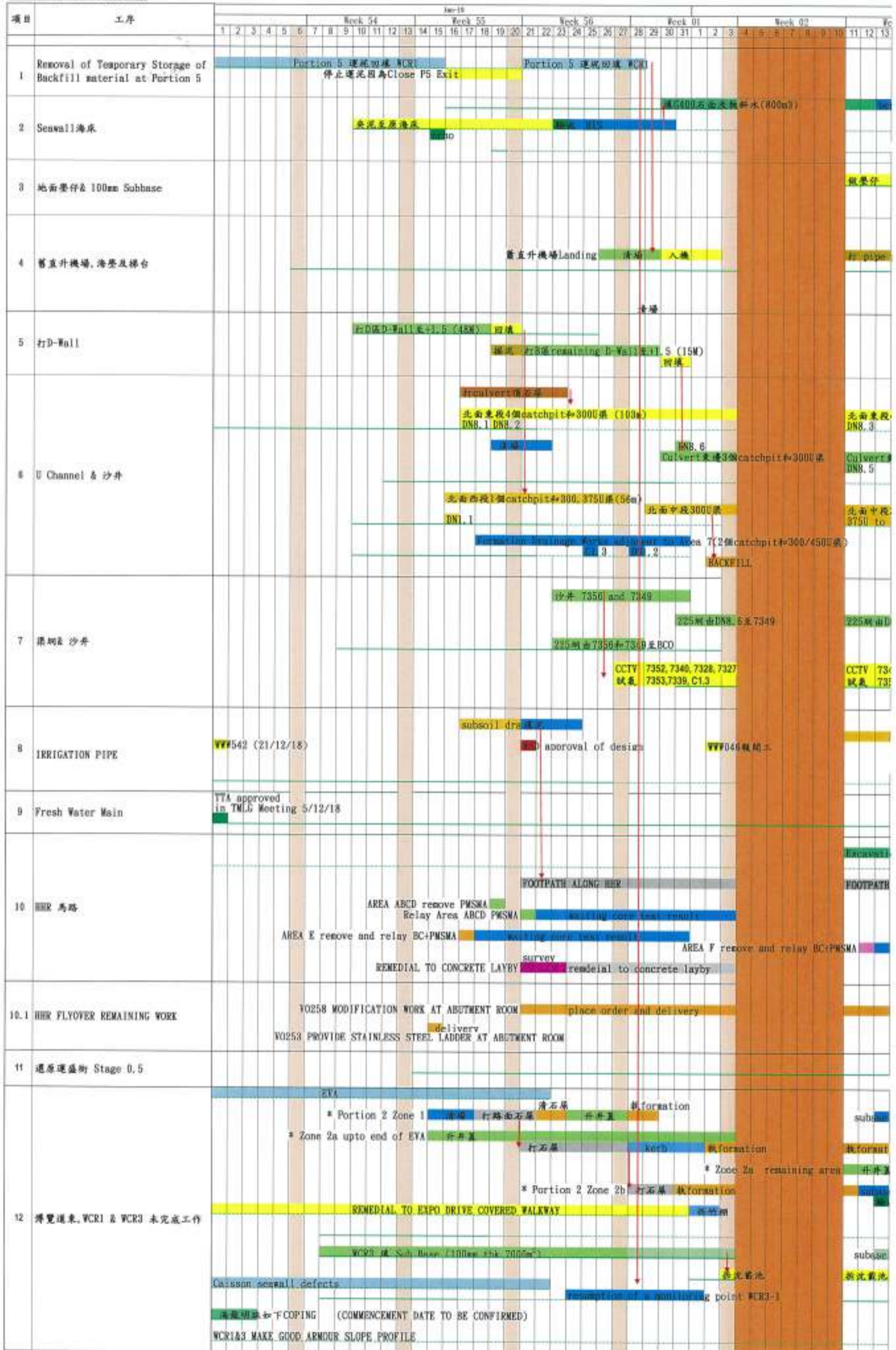


Activity ID	Activity Name	Original Duration	Start	Finish	2019															
					May	Jun	Jul	Aug												
Total		2586.0d	21-Mar-13 08:00 A	21-Mar-20 18:00																
DWP-08 - (2) - Update Progress As of 20 May 19		2586.0d	21-Mar-13 08:00 A	21-Mar-20 18:00																
Works in KD9 (Include Re-provisioning Works of KD4,KD5)		57.0d	24-Nov-18 08:00 A	31-Dec-18 18:00 A																
Reverting Traffic for IEC,VP Rd & TF St & Seawall Reinstatement (KD9)		57.0d	24-Nov-18 08:00 A	31-Dec-18 18:00 A																
TTA Revert Traffic Back to Original Alignment		19.0d	01-Dec-18 08:00 A	31-Dec-18 18:00 A																
East Bound TTA - IEC East Bound, Victoria Park Road & footpath along Sea Side		10.0d	01-Dec-18 08:00 A	07-Dec-18 18:00 A																
TTM Stage 1 - IEC (East Bound)		6.0d	01-Dec-18 08:00 A	07-Dec-18 18:00 A																
Reinstatement Existing Structure		6.0d	01-Dec-18 08:00 A	07-Dec-18 18:00 A																
EB_1020	Install metal parapet on parapet wall (30m)	6.0d	01-Dec-18 08:00 A	07-Dec-18 18:00 A																
TTM Stage 2 - Revert Traffic back to Original Victoria Road		4.0d	01-Dec-18 08:00 A	07-Dec-18 18:00 A																
Existing Bridge Parapet Reinstatement		4.0d	01-Dec-18 08:00 A	07-Dec-18 18:00 A																
EB_1180	Install metal parapet on parapet wall (40m)	4.0d	01-Dec-18 08:00 A	07-Dec-18 18:00 A																
West Bound - IEC West Bound & Tsing fung Street		5.0d	29-Dec-18 08:00 A	31-Dec-18 18:00 A																
TTM Stage 2 - Revert Traffic back to Original Tsing Fung Street		5.0d	29-Dec-18 08:00 A	31-Dec-18 18:00 A																
Existing Bridge Parapet Reinstatement		5.0d	29-Dec-18 08:00 A	31-Dec-18 18:00 A																
IECW_1140	Install metal parapet on parapet wall (60m)	5.0d	29-Dec-18 08:00 A	31-Dec-18 18:00 A																
Completion of Minor Outstanding / Remaining Works for KD9		57.0d	24-Nov-18 08:00 A	31-Dec-18 08:00 A																
East Bound - Minor Outstanding Works in Footpath after Substantial Completion of KD9		6.0d	05-Dec-18 08:00 A	20-Dec-18 18:00 A																
Minor Reinstatement Works for Central Median of IEC & Footbridge		6.0d	05-Dec-18 08:00 A	20-Dec-18 18:00 A																
EB_1810	Dismantlement of temp directional sign mounted on extg footbridge	1.0d	05-Dec-18 08:00 A	05-Dec-18 18:00 A																
EB_1800	Reconstruction of central divider (6m long, night work)	6.0d	17-Dec-18 08:00 A	20-Dec-18 18:00 A																
West Bound - Completion of Minor Outstanding / Remaining Works for KD9		57.0d	24-Nov-18 08:00 A	31-Dec-18 08:00 A																
Minor Reinstatement Works in IEC West Bound		57.0d	24-Nov-18 08:00 A	31-Dec-18 08:00 A																
IECW_1610	Repairing of extg conc deck surface after milling of temp asphalt at IEC W/B and E/B (Sun midnight only)	57.0d	24-Nov-18 08:00 A	24-Dec-18 18:00 A																
IECW_1660	Replacement of new rubber seal on extg MJ at IEC W/B and E/B (night work)	4.0d	26-Nov-18 08:00 A	31-Dec-18 08:00 A																
IECW_1600	Replacement of new movement joint at IEC W/B (Sun midnight only)	8.0d	27-Dec-18 08:00 A	30-Dec-18 18:00 A																
KD11, KD12, KD13, KD18 Establishment Works for Landscape Softworks		385.0d	21-Mar-19 08:00 A	21-Mar-20 18:00																
KD11 - Section 7A: Portion XIV & XV (Victoria Park Open Space)		365.0d	21-Mar-19 08:00 A	21-Mar-20 18:00																
EW_1012	Establishment Works - for Landscape Softworks and transplanted trees in Portion XV	365.0d	21-Mar-19 08:00 A	21-Mar-20 18:00																
KD13 - Section 7C: Portion IVA, VA, VIII, IX, XII (excl. DBH>500mm)		365.0d	21-Mar-19 08:00 A	21-Mar-20 18:00																
EW_1040	Establishment Works - for Landscape Softworks and transplanted trees in Portion IVA, VA, VIII, IX, XII excl. DBH>500mm	365.0d	21-Mar-19 08:00 A	21-Mar-20 18:00																
KD18 - Section 11: Transplanted Trees DBH>500mm in Portion VA and XII		365.0d	21-Mar-19 08:00 A	21-Mar-20 18:00																
EW_1050	Establishment Works - for Landscape Softworks and transplanted trees DBH>500mm in Portion VA, XII	365.0d	21-Mar-19 08:00 A	21-Mar-20 18:00																
KD10 - Preservation and Protection of Trees		1088.0d	21-Mar-13 08:00 A	21-May-19 18:00																
PPT_0000	Preservation and Protection of Existing Trees	1088.0d	21-Mar-13 08:00 A	21-May-19 18:00																
KD15 & KD8 - Mooring Components Upkeep (CBTS and ATS)		979.0d	15-May-14 08:00 A	19-Jun-19 18:00																
MAR_3020	Mooring Upkeep at Portion X(10) & XVI(16) - CBTS	979.0d	15-May-14 08:00 A	19-Jun-19 18:00																

Wan Chai Development Phase II - East
 Central - Wan Chai Bypass at Wan Chai
 Contract: HK/2009/02

Remaining Works Programme



項目	工序	Feb-10				Feb-11				Feb-12				Feb-13				Feb-14				Feb-15							
		14	15	16	17	18	19	20	21	22	23	24	25	26	27	28	29	30	31	1	2	3	4	5	6				
1	Removal of Temporary Storage of Backfill material at Portion 5																												
2	Seawall海床 剝Armour																												
3	地面墊仔& 100mm Subbase 鋪石仔(100mm)																												
4	舊直升機場, 海墘及梯台 pile, CAPING BEAM, Rockfill Level, Precast Unit																												
5	打D-Wall																												
6	U Channel & 沙井																												
7	渠網& 沙井 NR. 3 渠 7350 (24m) 19, 7356																												
8	IRRIGATION PIPE 灑花水3個 WATER POINT & PLANTER 1500																												
9	Fresh Water Main STAGE 1 TTA (HRR) + HYS AECOM OFFICE STAGE 2 TTA (HRR)																												
10	HRR 馬路 Installation of precast end block concreting of footing Installation of barrier OPENING OF HRR (notional, to be confirmed)																												
10.1	HRR FLYOVER REMAINING WORK carry out work install ladder																												
11	遷東運盛街 Stage 0.5 PHASE 1 (notional, to be confirmed)																												
12	博覽道東, WCR1 & WCR3 未完成工作 subbase WCR3 圍欄 (150M) (TBC Alignment) subbase 遷行人路 (to be confirmed) WCR 123 Make good Armour Slope Profiles																												

Wan Chai Development Phase II - East
 Central - Wan Chai Bypass at Wan Chai
 Contract: HK/2009/02
 Remaining Works Programme

項目	工序	June																																			
		Week 18					Week 19					Week 20					Week 21					Week 22															
		27	28	29	30	31	1	2	3	4	5	6	7	8	9	10	11	12	13	14	15	16	17	18	19	20	21	22	23	24	25	26	27	28	29	30	
1	Removal of Temporary Storage of Backfill material at Portion 5																																				
2	Seawall 海床																																				
3	地面墊仔 100mm Subbase																																				
4	舊直升機塔, 海墜及梯台																																				
5	打D-Wall																																				
6	U Channel & 沙井																																				
7	渠網 & 沙井																																				
8	IRRIGATION PIPE																																				
9	Fresh Water Main																																				
10	HHR 馬路																																				
10.1	HHR FLYOVER REMAINING WORK																																				
11	還原運盛街 Stage 0.5																																				
12	博覽道東, WCR1 & WCR3 未完成工作																																				